

Human Beta Klotho Protein

Cat. No. KLB-HM101



Description

| | |
|-------------------------|---|
| Source | Recombinant Human Beta Klotho Protein is expressed from HEK293 with His tag at the C-Terminus. It contains Met30-Thr983. |
| Accession | Q86Z14 |
| Molecular Weight | The protein has a predicted MW of 111.6 kDa. Due to glycosylation, the protein migrates to 115-130 kDa based on Tris-Bis PAGE result. |
| Endotoxin | Less than 1EU per µg by the LAL method. |
| Purity | > 95% as determined by Tris-Bis PAGE > 95% as determined by HPLC |

Formulation and Storage

| | |
|-----------------------|---|
| Formulation | Lyophilized from 0.22µm filtered solution in PBS (pH 7.4). Normally 8% trehalose is added as protectant before lyophilization. |
| Reconstitution | Centrifuge the tube before opening. Reconstituting to a concentration more than 100 µg/ml is recommended. Dissolve the lyophilized protein in distilled water. |
| Storage | -20 to -80°C for 12 months as supplied from date of receipt. -80°C for 3 months after reconstitution. Recommend to aliquot the protein into smaller quantities for optimal storage. Please minimize freeze-thaw cycles. |

Background

Beta-klotho (KLB) is a coreceptor required for endocrine fibroblast growth factor (FGF) 15/19 and FGF21 signaling in the brain. Klb is prominent within the hypothalamus, which is consistent with its metabolic functions, but diverse roles for Klb are now emerging. Central Klb expression is low but discrete and may govern FGF-targeted sites.

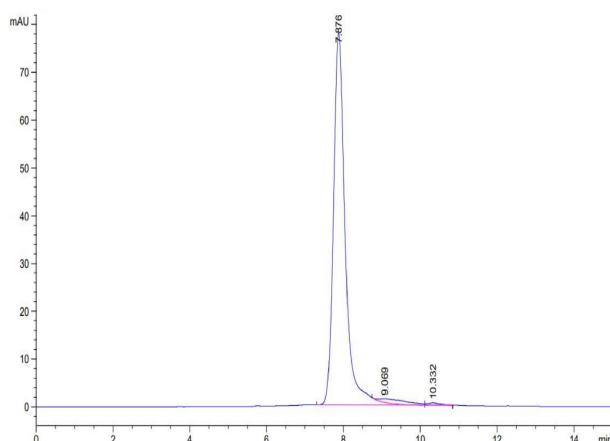
Assay Data

Tris-Bis PAGE



Human Beta Klotho on Tris-Bis PAGE under reduced conditions. The purity is greater than 95%.

SEC-HPLC

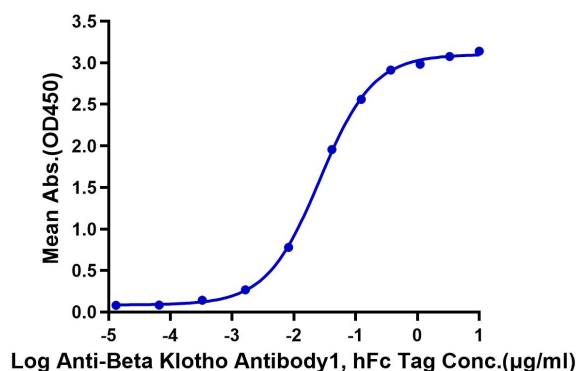


The purity of Human Beta Klotho is greater than 95% as determined by SEC-HPLC.

Assay Data

ELISA Data

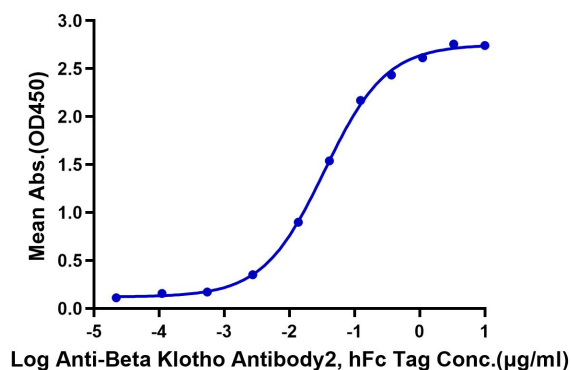
Human Beta Klotho, His Tag ELISA
0.2µg Human Beta Klotho, His Tag Per Well



Immobilized Human Beta Klotho at 2µg/ml (100µl/Well). Dose response curve for Anti-Beta Klotho Antibody1, hFc Tag with the EC50 of 24.1ng/ml determined by ELISA (QC Test).

ELISA Data

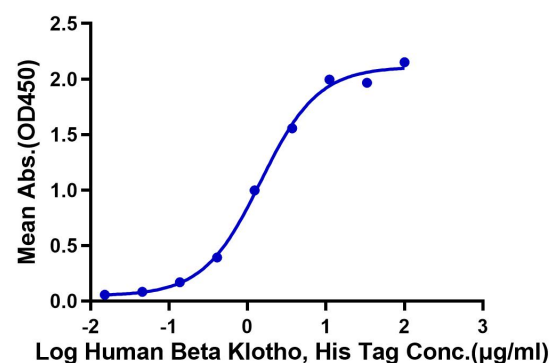
Human Beta Klotho, His Tag ELISA
0.2µg Human Beta Klotho, His Tag Per Well



Immobilized Human Beta Klotho at 2µg/ml (100µl/Well). Dose response curve for Anti-Beta Klotho Antibody2, hFc Tag with the EC50 of 34.6ng/ml determined by ELISA (QC Test).

ELISA Data

Human Beta Klotho, His Tag ELISA
0.2µg Human FGF21, mFc Tag Per Well



Immobilized Human FGF21, mFc Tag at 2µg/ml (100µl/Well) on the plate. Dose response curve for Human Beta Klotho, His Tag with the EC50 of 1.48µg/ml determined by ELISA.